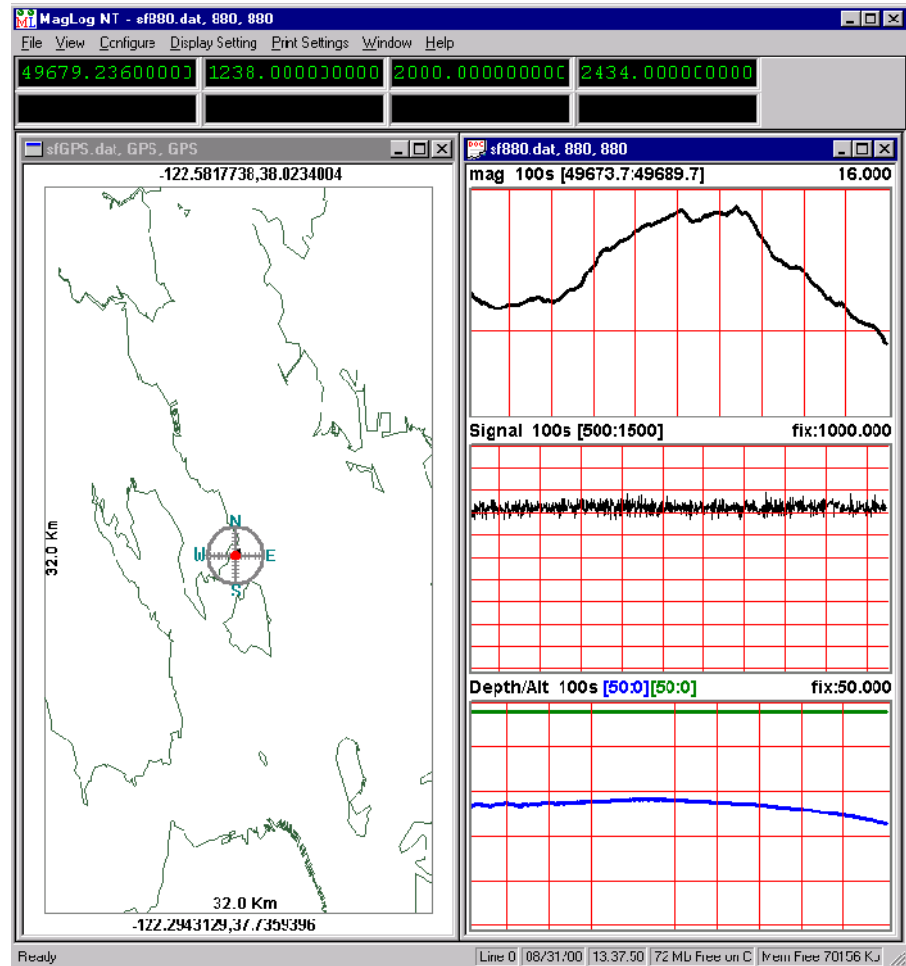




MagLogLITE - Data Logger and System Controller

- Provides up to 10 Serial Port interface for GPS plus G-880, G-881 and G-877 Marine Magnetometer or Gradiometer Systems
- Designed with a **NEW Configuration Wizard** for automatic setup of Marine and Vehicle survey operations
- Integrated GPS Trackplot with Downloadable Arcinfo Shape Maps
- Runs on Windows 98 or NT Multi-Threaded Multi-tasking operating system
- Real-time diagnostics performed on all data inputs, providing immediate feedback if data is not being transmitted, is out of range or fails other quality criteria.
- Geometrics offers complete turnkey systems including Cesium Vapor or Proton Precession sensors, tow cables, winches, GPS positioning and steering systems, Data Acquisition computers and data processing and display software and training.



MagLogLITE offers the marine or land survey operator an easy to use and sophisticated Data Logging and Display controller with superior data handling capabilities for logging, displaying and printing multi-channel asynchronous data transmissions. Single sensor or Multi-sensor gradiometer arrays with depth, altitude and/or differential GPS are easily configured for storing to disk, display and printout using the new step-by-step Configuration Wizard.

MagLogLITE provides the display capability to configure multiple re-sizeable display channels each with their own horizontal and vertical scale parameters with multiple color coded traces in each window channel. Horizontal scrolling is available for depth readouts, vertical for magnetic field displays.

Go-NoGo warning lights at the top of the display alert the operator to any errors or data conditions which exceed user preset levels of min/max or noise components.

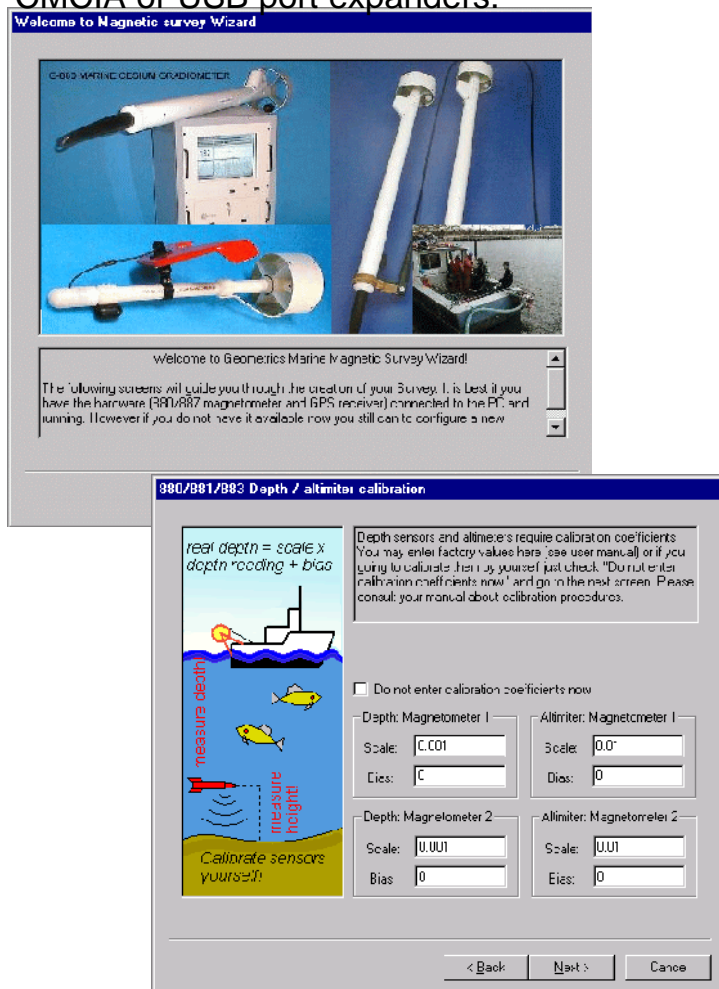
A special GPS window is included which shows the real-time position with complete zoom controls and plot of survey track. Maps may be imported as ArcInfo Shape Files for background reference on the GPS track plot map. All serial or position is available to be output to a rack-mount thermal or dot matrix printer for real-time hard copy. Digital data is logged to disk and time-stamped to an accuracy of 10 ms. Geometrics MagMap2000 post-processing program is then used to interpolate the position of each sensor between GPS readings, convert to UTM coordinates if required and export an X,Y,Z or Latitude-Longitude-Magnetometer data file for additional processing and analysis.

MaglogLite makes use of the latest multi-threading technology to ensure that critical events are not lost. For example, write- to-disk tasks maintain priority and data will be stored as it comes in, even if the plotting routines were to fall behind (very unlikely with modern computers). In addition, each sensor is logged independently of the others, so that any difficulty with one sensor transmission will not affect the others.

All of this activity takes place with maximum efficiency, controlled by the scheduling and prioritizing functions of the operating system.

This means that whether you are logging 1 sensor or 20, or if some sensors are logging at 1 Hz and others at 100 Hz, the system will maintain optimal efficiency and data integrity.

Suggested computer platform for large ship marine applications comprises an industrial grade rackmount Pentium III 750 running NT4.0 or Win98SE with a large SCSI Hard drive, rack-mount Color LCD Monitor, special multiport serial interface boards, and built in Iomega Zip or Jazz drives for offloading and archiving data. Smaller vessel surveys can be conducted with a standard 500MHz Pentium laptop computer with expanded serial port capability using PCMCIA or USB port expanders.



Configuration Wizard makes setup and calibration of depth/altitude easy

SPECIFICATIONS SUBJECT TO CHANGE WITHOUT NOTICE

08/00

GEOMETRICS, INC. 2190 Fortune Drive, San Jose, California 95131
408-954-0522 ☎ Fax 408-954-0902 ☎ Internet: sales@mail.geometrics.com

GEOMETRICS Europe Manor Farm Cottage, Galley Lane, Great Brickhill, Bucks,
England MK179AB ☎ 44-1525-261874 ☎ Fax 44-1525-261867

GEOMETRICS China Laurel Industrial Co. Inc. - Beijing Office, Room 2509-2511, Full Link
Plaza
#18 Chaoyangmenwai Dajie, Chaoyang District, Beijing, China 100020
Tel 10-6588-1126 (1127..1130), 10-6588-1132 ☎ Fax 010-6588-1162

