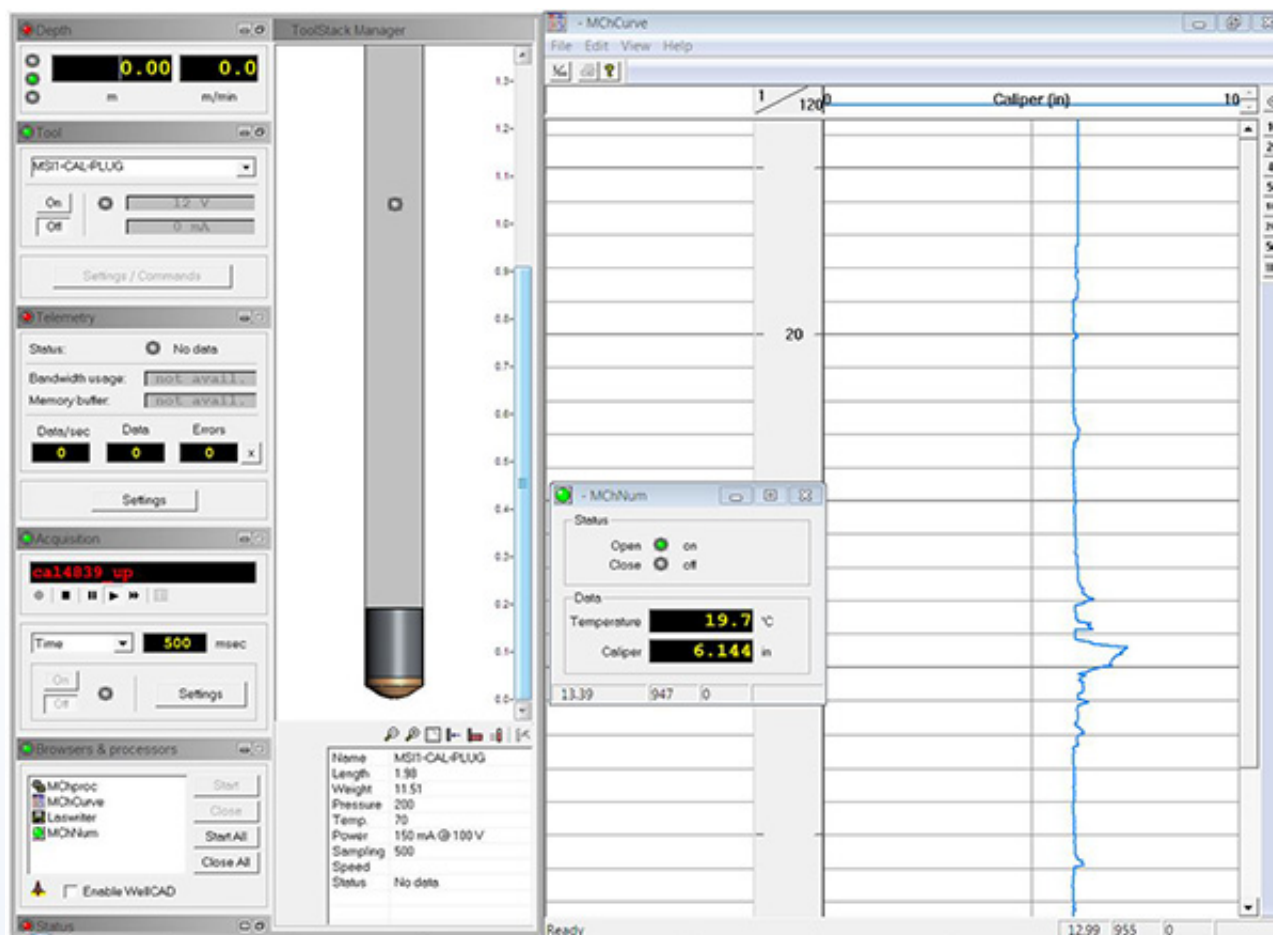


QL40-CAL Data Sheet

The **QL40CAL** sub records a continuous borehole diameter log using three mechanically coupled arms in contact with the borehole wall. This 3-arm caliper measurement serves as a useful initial log to assess borehole conditions before deploying more specialized or costly probes, including those with radioactive sources.

The **caliper arms** are controlled from the **MATRIX LoggerSuite** application at the surface, allowing the probe to be lowered with the arms closed. Once positioned at the bottom of the borehole, the arms are opened, and the spring-loaded arms adjust to variations in borehole diameter as the probe is raised.



Other QL probes commonly stacked with the QL40CAL include the QL40GR (Natural Gamma), QL40RES (Multi-point Resistivity), QL40IP (Induced Polarisation), and the QL40FTC (Temperature & Fluid Resistivity)

Operating Conditions

W - Water ?

M - Mud ?

D- Dry ?

S - Steel ?

P - PVC Borehole ?

UC- Uncased ?

Product Dimensions

Physical	Dimensions (L x W x H)	Weight
(instrument only)	194cm x 4.2cm x 4.2cm	10kg

Technical Specifications

Pressure Rating:	200 Bar (3000 PSI).
Operating Temperature:	Up to 80°C.
Sensor:	Micro-Processor Controlled Potentiometer.
Accuracy:	1mm.
Resolution:	0.5mm