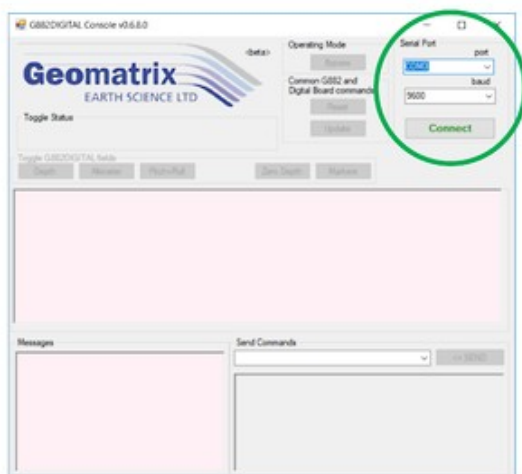


G882-DIGITAL Console Program Data Sheet

To accompany the Digital Accessory board Geomatrix developed a simple console for managing active channels, zeroing the depth measurement (Null), and programming the instrument baud rate and sample rate.

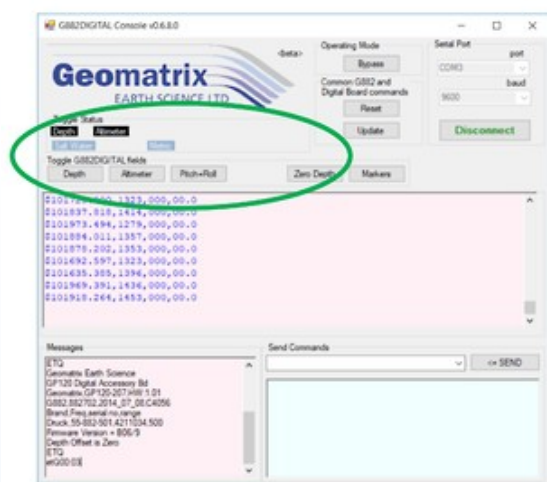
[Click to download the console program](#)

In addition to digitising all auxiliary data channels the service and repair history of the G-882 can be recorded and recalled by assets owners.



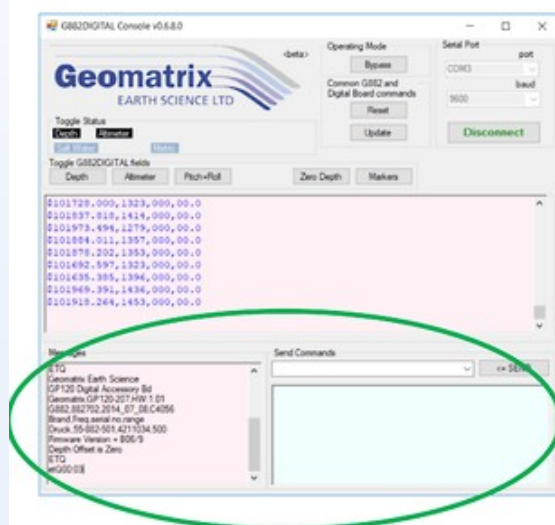
- Use the G882 digital console to configure the accessory ports.

- Select the correct com port and baud rate then press connect.



- Activate or deactivate the digital channels using the digital field toggles.

- Null the depth readings using the zero depth button.



- Use drop down commands to toggle the units of measurement and water type.

- Check serial numbers and altimeter type.