

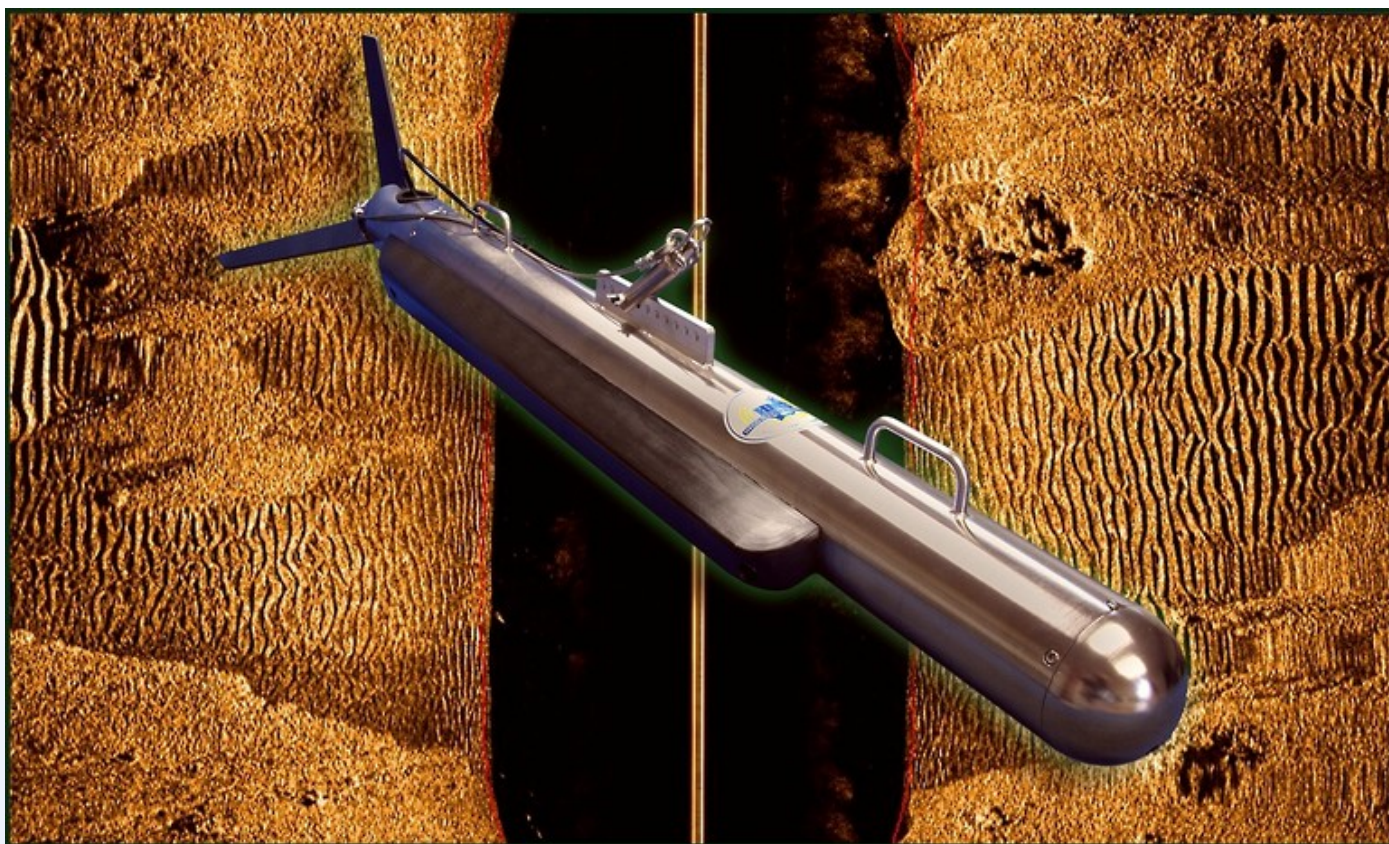
## HMS-624 Digital CHIRP Side Scan Sonar Data Sheet

The HMS-624 Side Scan Sonar System utilizes advanced technology to provide superior imaging capabilities for deep and shallow water applications. The Tow Fish electronics incorporate FSI's CHIRPceiver™ 24-bit CHIRP signal processing along with dual simultaneous true 100/400 KHz operation which results in very high resolution side scan data at towing depths up to 2,000 meters.

The Topside Power/Data Multiplexer Interface is packaged in a standard 2U 19" rack mount enclosure and provides a 4Mb/s DSL connection for the Tow Fish, and a standard Ethernet connection for the data processor interface. The HMS-624 uses a flexible control interface connected via Ethernet that allows the user to set operating parameters such as CHIRP/CW modes, pulse length, range, and gain.

The system is compatible with third-party Software packages such as OIC GeoDAS, Triton ISIS, and others.

- Dual Simultaneous 100/400 KHz Frequency Operation
- Industry Standard Ethernet Interface for Data, Control, & Processing
- DSL Over Coax Tow Vehicle Data Interface
- Compatible with Industry Standard Survey Software
- CHIRP and CW modes
- Stainless Steel Tow Fish
- Heading, Pitch, & Roll Sensors (Depth Optional)
- Two Serial Input Ports for integration of a Magnetometer or other external sensors



## Product Dimensions

Physical	Dimensions (L x W x H)	Weight
(instrument only)	152.4 cm x 12.7 cm x 25cm	55 kg in air, 41 kg in water

## Technical Specifications

<b>Operation Frequency:</b>	100 kHz, 400 kHz simultaneous; other frequencies available by request
<b>Signal Type:</b>	Chirp or CW, User defined
<b>Operating Range:</b>	100 kHz – 600 meters per side 400 kHz – 200 meters per side
<b>Horizontal Beam Width:</b>	100 kHz – 1.0 degrees 400 kHz – 0.3 degrees
<b>Vertical Beam Width:</b>	60 degrees
<b>Depression Angle:</b>	Fixed 20 degrees tilted down
<b>Resolution Across Track:</b>	100 kHz – 8cm 400 kHz – 2cm
<b>Standard Sensor:</b>	Heading, Pitch, Roll
<b>Optional Sensor:</b>	Depth
<b>Serial Inputs for External Sensors:</b>	Two serial inputs for external sensors such as a Magnetometer, CTD, etc.; 12 or 24 VDC Sensor Power
<b>Material:</b>	316 Stainless Steel
<b>Operating Depth:</b>	2,000 meters
<b>Power Supply:</b>	
<b>Enclosure type:</b>	2U 19" rack mount
<b>Power Input:</b>	115/230 VAC, 50/60 Hz
<b>Tow vehicle power supply rating:</b>	300 VDC @ 2 AMPS
<b>Tow vehicle data interface:</b>	DSL, up to 4 Mb/s
<b>Sonar Processor data interface:</b>	Ethernet
<b>Tow Cable Type:</b>	Coaxial
<b>Tow Cable Lengths:</b>	Up to 6,000 meters, depending on cable diameter