

SAMM Data Sheet

SAMM is a Stand Alone Mosaicking Module designed to run alongside existing manufacturers data acquisition programs to enhance survey capability by proving real-time mosaicking, georeferenced charts, satellite imagery overlays and geo-coded observation classification.

- Easy to Use Plug-and-Play Add-on to Your Forward Look Sonar
- Automatically Creates Mosaics in Real Time from Forward Look Sonar Data
- Automatically Loads Background Charts or Imagery for Easy Geo-Referencing
- Supports Post-Processing, Swath Layering, Imagery Enhancement and Export

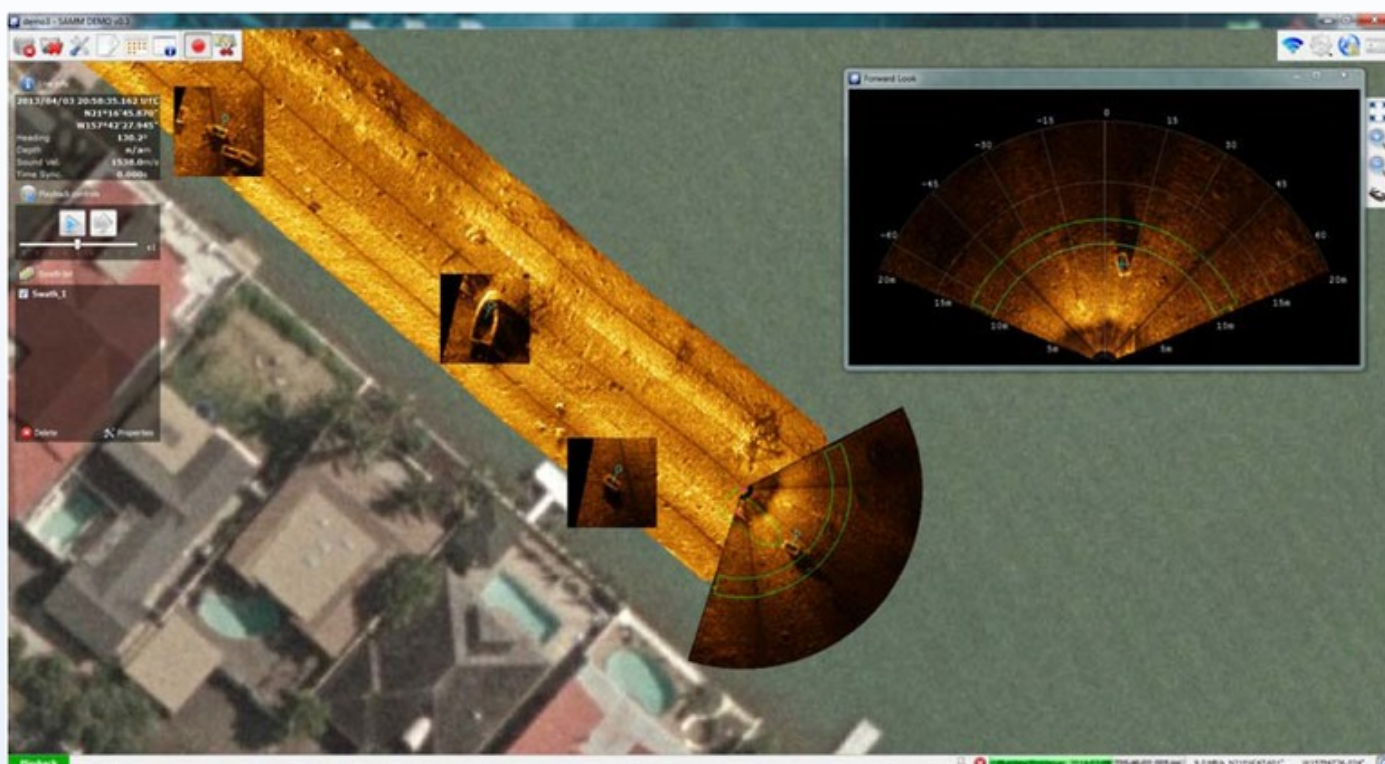
SAMM is an affordable plug-and-play software package that turns your sonar into a survey system, giving you real time mosaics and 100% confidence in your coverage.

Compatible with leading Forward Look, Side Scan Sonars and Multi Beam systems. SAMM connects to the instrument data feed providing seamless integration with leading instrumentation.

Data Acquisition Features:

- Stand-alone module, seamlessly compatible with your existing FLS system
- Interactive control of track layering, processing and sensor offsets
- Simultaneous mosaicking and logging of broadcast data
- Pan, zoom, target marking and vessel track

After connecting to the instrument and configuring the navigation port, SAMM will automatically search the internet for local georectified charts and satellite images for use as a background layer.



Post-Acquisition Processing Features:

- Navigation and heading filtering
- Sensor/navigation offset and bias corrections
- Instant reprocessing and editing of recorded data
- Easy image export to GeoTIFF and Google Earth
- Per-track adjustment of contrast/gamma/brightness
- 16-bit imagery support for optimum image resolution
- Interactive image selection tools for cherry picking data
- Contact marking, measurement, classification and export
- Layering of individual tracks for optimal mosaic composition
- Background display of air photos, satellite imagery, raster and vector charts

Videos

OIC's "SAMM" Stand-Alone Mosaicking Module for FLS - Featuring Kongsberg M3 data
<https://www.youtube.com/watch?v=i2aAK9mkDw>

OIC's Stand-Alone Mosaicking Module (SAMM) featuring BlueView900
https://www.youtube.com/watch?v=wm1_WzloVSc

SAMM Featuring Trittech Gemini
<https://www.youtube.com/watch?v=moM5MATkXdQ>